

### Application

Cooling towers protect the pressure instruments from high process temperatures. Air circulates around the fins reducing the temperature of the process.

A cooling tower is recommended when a directly mounted instruments process temperature is in excess of 100 degrees Celsius.



### Standard Features

#### Size

1/2" NPT

---

#### Maximum Operating pressure

8000 PSI

---

#### Maximum Process Temperature

570 degrees Fahrenheit / 300 degrees Celsius

---

#### Material

316 stainless steel

---

#### CRN

Canadian wide CRN

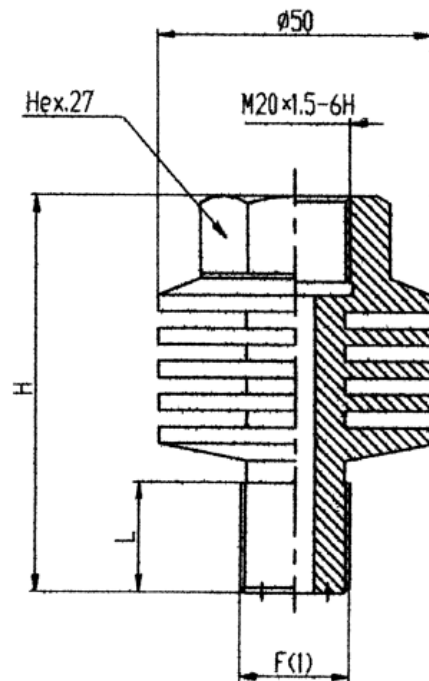
---

### Features and Benefits

- Reduces Process Temperature up to 75%
- Reduces gauge shock
- Made from solid bar
- Eliminates the old pig tail type giving a more secure and rigid mount

Dimensions in mm

Cooling tower



\*Degree of cooling is dependent on ambient conditions

---

**Western Gauge & Instruments Ltd. – Head Office**  
1,2 4045 – 74 Ave S.E.  
Calgary, AB T2C 1H5  
Ph: (403) 236-4888 Fax: (403) 236-7629  
Email: sales@wgilt.com

**Western Gauge & Instruments Ltd. – Branch Office**  
6624 – 50<sup>th</sup> Street  
Edmonton, AB T6B 2N7  
Ph: (780) 463-3800 Fax: (780) 463-3990  
Email: edm@wgilt.com