

WGI Block & Bleed Needle Valves

Gauge Valves

Specifications

Sizes

1/2" x 1/2" (3) or 3/4" x 1/2" (3) NPT

Maximum Operating Pressure

10,000 psi

Body & Bonnet Material

A105 Carbon steel or 316 Stainless steel

Stem Material

316 Stainless steel

Stem Packing

PTFE Teflon®

Stem

Non rotating

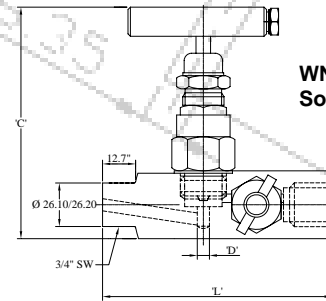
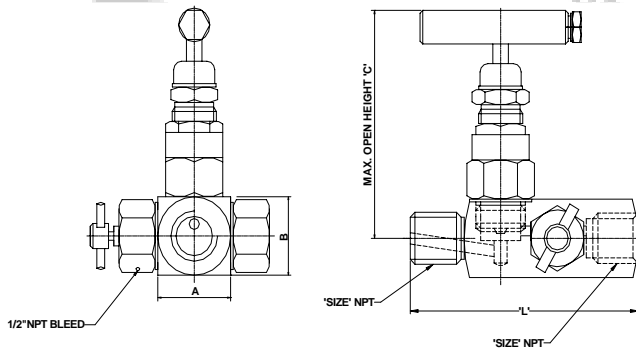
Temperature Limits

-40° to 500°F (-40 to 250°C)



WN8534

Dimensions & Part Numbers



WN8536-SW
Socket Weld

Part No.	Size	Pattern	Ends	Matl.	A	B	C	L	*L	D
WN8534	1/2" x 1/2"	G	MxF	316SS	32.0	32.0	88.0	95.0	n/a	7.0
WN8536	3/4" x 1/2"	G	MxF	316SS	32.0	32.0	88.0	95.0	n/a	7.0
WN8536-SW	3/4" x 1/2"	G	MxF	316SS	38.0	38.0	90.0	95.0	n/a	7.0
WN7534	1/2" x 1/2"	G	MxF	C/S	32.0	32.0	88.0	95.0	n/a	7.0
WN7536	3/4" x 1/2"	G	MxF	C/S	32.0	32.0	88.0	95.0	n/a	7.0

D = Orifice *L = Lagged Valve

Lagged Block & Bleed Valve

3" neck extension for piping insulation

Part No.	Size	Pattern	Ends	Matl.	A	B	C	L	D
WN8536-3L	3/4" x 1/2"	G	MxF	316SS	38.0	38.0	92.0	180.0	7.0

No.	Description	QTY.
1	Body	1
2	Gland Body	1
3	Gland Retainer	1
4	Gland Seal	2
5	Check Nut	1
6	Spindle	1
7	Trim	1
8	Handle	1
9	Washer	1
10	Lock Pin	1
11	Dust Cap	1

