

Application

WGI Classic series pressure gauges are for general service applications where cost savings are needed. WGI Classic series gauges are used in many different industries such as pumping systems, hydraulic or pneumatic systems and compressor packages and also as a contractors gauge. Not for use in corrosive chemical applications.

Ranges (all ranges not stocked)

Vacuum / Compound to 30"Hg / 0 / 300 PSI

Pressure from 15 PSI to 1000 PSI

Standard Features

Size
2" Dial

Fill Fluid
None

Lens (Window) Material
Glass

Dial
White aluminum with black and red lettering

Pointer
Black aluminum

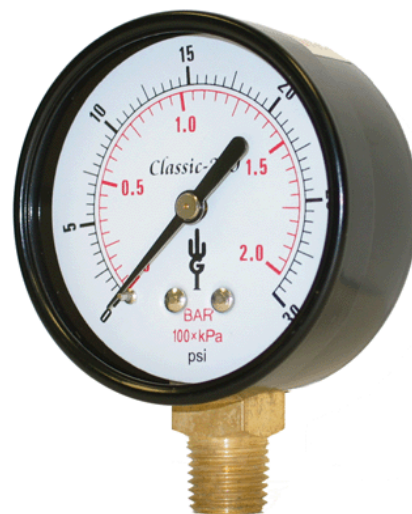
Accuracy
± 3%-2%-3% ASME B40.1 Grade B

Tube & Socket
Brass tube soldered to brass socket

Temperature Limits
-40°C (-4°F) to 70°C (158°F) ambient and medium

Pressure Ranges
-30" Hg. Vacuum to 1000 psi/kpa

Case Material
Black steel



Optional Features (minimum order may apply)

Private label (your logo on dial)

Custom dial layout

Single scale, Bar, kPa, Kg/cm²

Rubber "gauge guard"

Cleaned for O2 Service

Nickel or Chrome plating

Plastic lens

Special connections limited to wrench flat area

Custom soldering connection for high temperatures

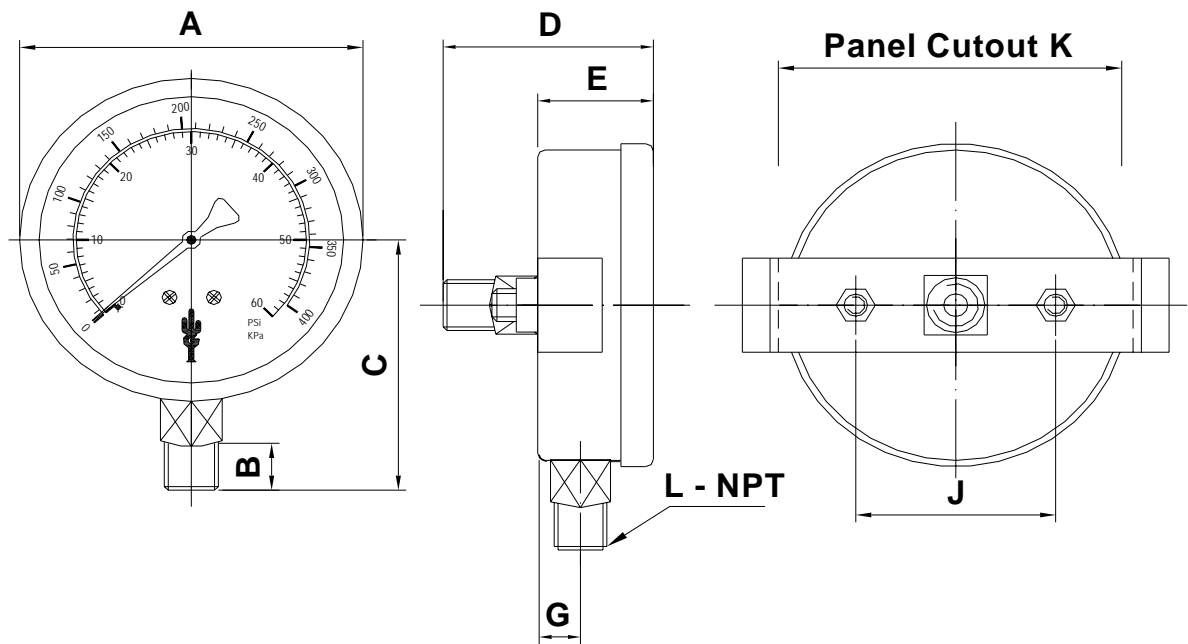
Stainless steel case

Brass case

Medical specification

Classic 200						
Connection	1/8" Bottom	1/4" Bottom	1/8" Centre Back	1/4" Center Back	1/8" CBU	1/4" CBU
Pressure Range	2" Dial	2" Dial	2" Dial	2" Dial	2" Dial	2" Dial
30" Hg Vac / -100kpa	WJ1105	WJ1405	WJ1805	WJ2005	WJ2405	WJ2605
30" Hg.x30 psi / -100 to 210kpa	WJ1112	WJ1412	WJ1812	WJ2012	WJ2412	WJ2612
30" Hg.x160psi / -100 to 1100 kpa	WJ1118	WJ1418	WJ1818	WJ2018	WJ2418	WJ2618
30" Hg.x300psi / -100 to 2100 kpa	WJ1124	WJ1424	WJ1824	N/S	WJ2424	WJ2624
0-15 psi / 105 kpa	WJ1140	WJ1440	WJ1840	WJ2040	WJ2440	WJ2640
0-30 psi / 210 kpa	WJ1142	WJ1442	WJ1842	WJ2042	WJ2442	WJ2642
0-60 psi / 420 kpa	WJ1146	WJ1446	WJ1846	WJ2046	WJ2446	WJ2646
0-100 psi / 700 kpa	WJ1148	WJ1448	WJ1848	WJ2048	WJ2448	WJ2648
0-160 psi / 1100 kpa	WJ1152	WJ1452	WJ1852	WJ2052	WJ2452	WJ2652
0-200 psi / 1400 kpa	WJ1154	WJ1454	WJ1854	WJ2054	WJ2454	WJ2654
0-300 psi / 2100 kpa	WJ1158	WJ1458	WJ1858	WJ2058	WJ2458	WJ2658
0-400 psi / 2800 kpa	WJ1160	WJ1460	WJ1860	WJ2060	WJ2460	WJ2660
0-600 psi / 4200 kpa	WJ1164	WJ1464	WJ1864	WJ2064	WJ2464	WJ2664
0-1000 psi / 7000 kpa	WJ1172	WJ1472	WJ1872	WJ2072	WJ2472	WJ2672

Items in Black are normally stock.



Series	A	B	C	D	E	G	J	K	L
WJ11	52.5 / 2.06	10.0 / 0.39	46.0 / 1.8	n/a	28.0 / 1.1	10.0 / 0.4	n/a	n/a	1/8" npt
WJ14	52.5 / 2.06	10.0 / 0.39	46.0 / 1.8	n/a	28.0 / 1.1	10.0 / 0.4	n/a	n/a	1/4" npt
WJ18	52.5 / 2.06	12.0 / 0.47	n/a	48.0 / 1.8	28.0 / 1.1	n/a	n/a	n/a	1/4" npt
WJ20	52.5 / 2.06	12.0 / 0.47	n/a	48.0 / 1.8	28.0 / 1.1	n/a	n/a	n/a	1/4" npt
WJ24	58.0 / 2.2	12.0 / 0.47	n/a	48.0 / 1.8	30.0 / 1.18	n/a	35.0	51.5 / 2.0	1/8" npt
WJ26	58.0 / 2.2	12.0 / 0.47	n/a	48.0 / 1.8	30.0 / 1.18	n/a	35.0	51.5 / 2.0	1/4" npt

Western Gauge & Instruments Ltd. – Head Office
 1,2 4045 – 74 Ave S.E.
 Calgary, AB T2C 1H5
 Ph: (403) 236-4888 Fax: (403) 236-7629
 Email: sales@wgilt.com

Western Gauge & Instruments Ltd. – Branch Office
 6624 – 50th Street
 Edmonton, AB T6B 2N7
 Ph: (780) 463-3800 Fax: (780) 463-3990
 Email: edm@wgilt.com