

### Application

WGI Classic series pressure gauges are for general service applications where cost savings are needed. WGI Classic series gauges are used in many different industries such as pumping systems, hydraulic or pneumatic systems and compressor packages and also as a contractors gauge. Not for use in corrosive chemical applications.

### Ranges (all ranges not stocked)

Vacuum / Compound to 30"Hg / 0 / 300 PSI

Pressure from 15 PSI to 1000 PSI

### Standard Features

#### Size

2½" Dial

#### Fill Fluid

None

#### Lens (Window) Material

Glass

#### Dial

White aluminum with black and red lettering

#### Pointer

Black aluminum

#### Accuracy

± 3%-2%-3% ASME B40.1 Grade B

#### Tube & Socket

Brass tube soldered to brass socket

#### Temperature Limits

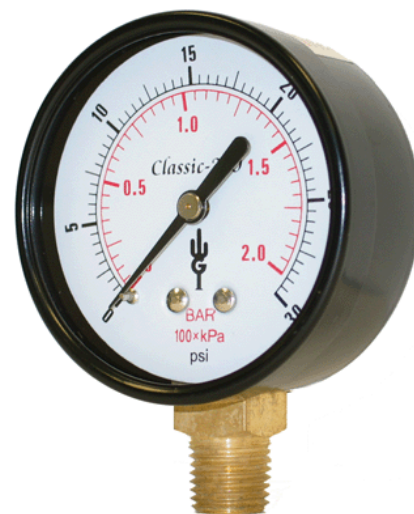
-40°C (-4°F) to 70°C (158°F) ambient and medium

#### Pressure Ranges

-30" Hg. Vacuum to 1000 psi/kpa

#### Case Material

Black steel



### Optional Features (minimum order may apply)

Private label (your logo on dial)

Custom dial layout

Single scale, Bar, kPa, Kg/cm<sup>2</sup>

Rubber "gauge guard"

Cleaned for O2 Service

Nickel or Chrome plating

Plastic lens

Special connections limited to wrench flat area

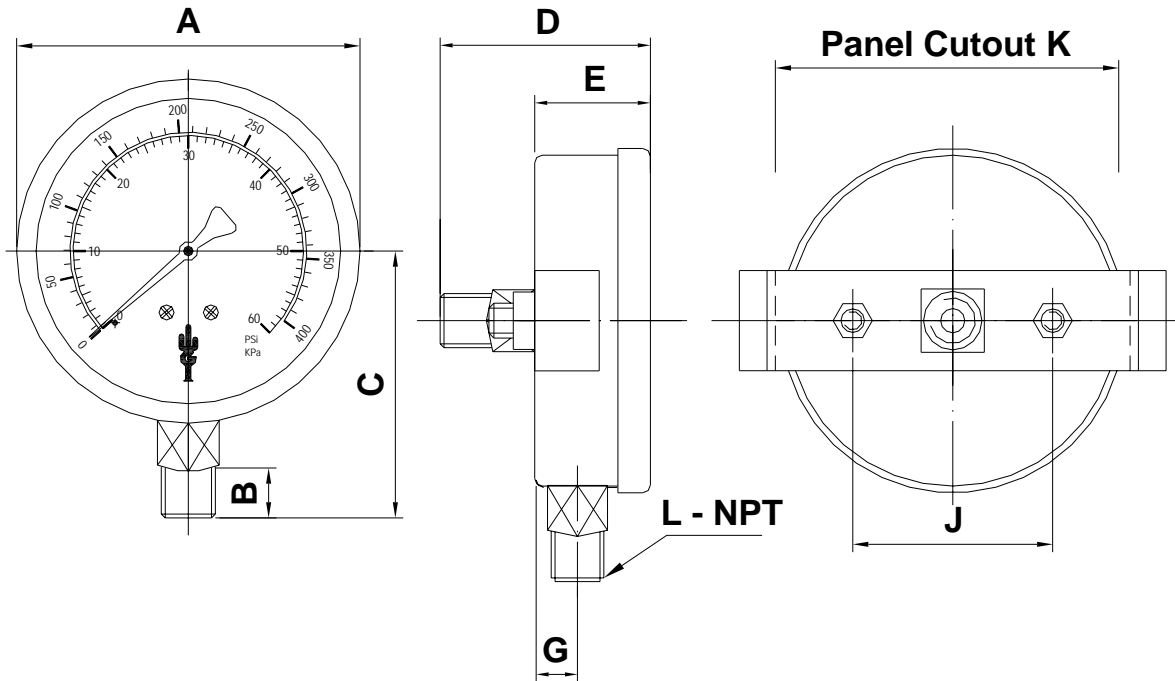
Custom soldering connection for high temperatures

Stainless steel case

Brass case

Medical specification

Connection	1/8" Bottom	1/4" Bottom	1/8" back	1/4" back	1/8" CBU	1/4" CBU
<b>Pressure Range</b>	<b>2 1/2" Dial</b>	<b>2 1/2" Dial</b>	<b>2 1/2" Dial</b>	<b>2 1/2" Dial</b>	<b>2 1/2" Dial</b>	<b>2 1/2" Dial</b>
30" Hg Vac / -100 kpa	WJ4005	WJ4605	WJ5005	WJ5405	WJ6005	WJ6205
30" Hg. x 30 psi / -100 to 210 kpa	WJ4012	WJ4612	WJ5012	WJ5412	WJ6012	WJ6212
30" Hg. x 160 psi / -100 to 1100 kpa	WJ4018	WJ4618	WJ5018	WJ5418	WJ6018	WJ6218
30" Hg. x 300 psi / -100 to 2100 kpa	WJ4024	WJ4624	WJ5024	WJ5424	WJ6024	WJ6224
0-15 psi / 105 kpa	WJ4040	WJ4640	WJ5040	WJ5440	WJ6040	WJ6240
0-30 psi / 210 kpa	WJ4042	WJ4642	WJ5042	WJ5442	WJ6042	WJ6242
0-60 psi / 420 kpa	WJ4046	WJ4646	WJ5046	WJ5446	WJ6046	WJ6246
0-100 psi / 700 kpa	WJ4048	WJ4648	WJ5048	WJ5448	WJ6048	WJ6248
0-160 psi / 1100 kpa	WJ4052	WJ4652	WJ5052	WJ5452	WJ6052	WJ6252
0-200 psi / 1400 kpa	WJ4054	WJ4654	WJ5054	WJ5454	WJ6054	WJ6254
0-300 psi / 2100 kpa	WJ4058	WJ4658	WJ5058	WJ5458	WJ6058	WJ6258
0-400 psi / 2800 kpa	WJ4060	WJ4660	WJ5060	WJ5460	WJ6060	WJ6260
0-600 psi / 4200 kpa	WJ4064	WJ4664	WJ5064	WJ5464	WJ6064	WJ6264
0-1000 psi / 7000 kpa	WJ4072	WJ4672	WJ5072	WJ5472	WJ6072	WJ6272



Series	A	B	C	D	E	G	J	K	L
<b>WJ40</b>	68.0 / 2.6	12.0 / 0.47	50.0 / 1.9	n/a	28.0 / 1.1	10.0 / 0.4	n/a	n/a	1/8" npt
<b>WJ46</b>	68.0 / 2.6	12.0 / 0.47	50.0 / 1.9	n/a	28.0 / 1.1	10.0 / 0.4	n/a	n/a	1/4" npt
<b>WJ50</b>									
<b>WJ54</b>									
<b>WJ60</b>	68.0 / 2.6	12.0 / 0.47	n/a	48.0 / 1.8	30.0 / 1.18	n/a	48.0	62.5 / 2.0	1/8" npt
<b>WJ62</b>	68.0 / 2.6	12.0 / 0.47	n/a	48.0 / 1.8	30.0 / 1.18	n/a	48.0	62.5 / 2.0	1/4" npt

**Western Gauge & Instruments Ltd. – Head Office**  
 1,2 4045 – 74 Ave S.E.  
 Calgary, AB T2C 1H5  
 Ph: (403) 236-4888 Fax: (403) 236-7629  
 Email: sales@wgilt.com

**Western Gauge & Instruments Ltd. – Branch Office**  
 6624 – 50<sup>th</sup> Street  
 Edmonton, AB T6B 2N7  
 Ph: (780) 463-3800 Fax: (780) 463-3990  
 Email: edm@wgilt.com