

Application

WGI Classic series pressure gauges are for general service applications where cost savings are needed. WGI Classic series gauges are used in many different industries such as pumping systems, hydraulic or pneumatic systems and compressor packages and also as a contractors gauge. Not for use in corrosive chemical applications.

Ranges (all ranges not stocked)

Vacuum / Compound to 30"Hg / 0 / 300 PSI

Pressure from 15 PSI to 1000 PSI

Standard Features

Size

3½" Dial

Fill Fluid

None

Lens (Window) Material

Glass

Dial

White aluminum with black and red lettering

Pointer

Black aluminum

Accuracy

± 3%-2%-3% ASME B40.1 Grade B

Tube & Socket

Brass tube soldered to brass socket

Temperature Limits

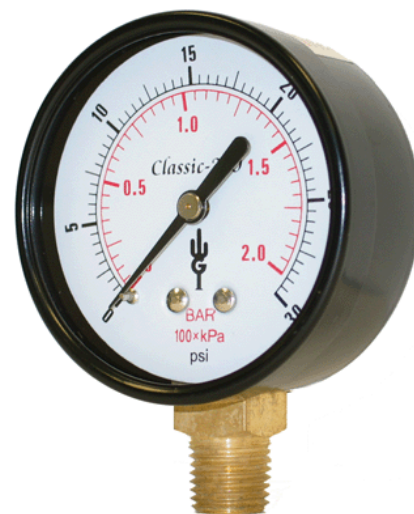
-40°C (-4°F) to 70°C (158°F) ambient and medium

Pressure Ranges

-30" Hg. Vacuum to 1000 psi/kpa

Case Material

Black steel



Optional Features (minimum order may apply)

Private label (your logo on dial)

Custom dial layout

Single scale, Bar, kPa, Kg/cm²

Rubber "gauge guard"

Cleaned for O2 Service

Nickel or Chrome plating

Plastic lens

Special connections limited to wrench flat area

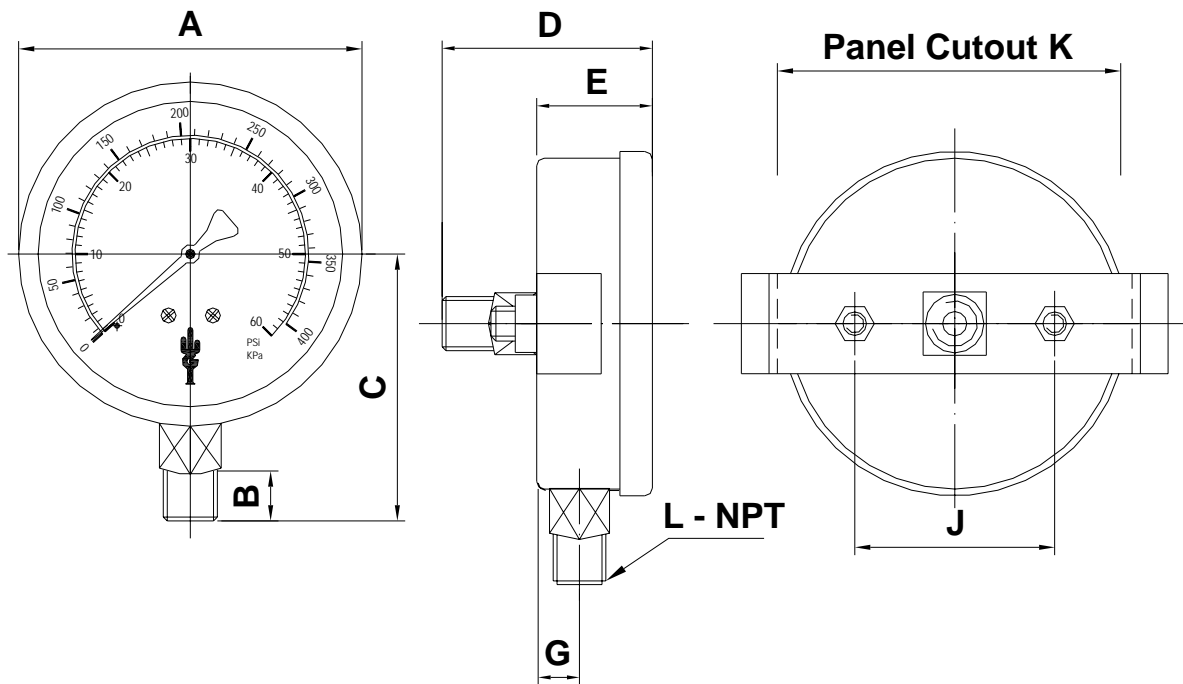
Custom soldering connection for high temperatures

Stainless steel case

Brass case

Medical specification

Connection	Classic 350								
	1/8" BTM	1/4" BTM	1/2" BTM	1/8" CBM	1/4" CBM	1/2" CBM	1/8" CBU	1/4" CBU	1/2" CBU
Pressure Range	3 1/2" Dial	3 1/2" Dial	3 1/2" Dial	3 1/2" Dial	3 1/2" Dial	3 1/2" Dial	3 1/2" Dial	3 1/2" Dial	3 1/2" Dial
30" Hg Vac / -100 kpa	WJ8105	WJ8005	WJ8205	WJ8305	WJ8405	WJ8505	WJ8605	WJ8805	WJ8905
30" Hg. x 30 psi / -100 to 210 kpa	WJ8112	WJ8012	WJ8212	WJ8312	WJ8412	WJ8512	WJ8612	WJ8812	WJ8912
30" Hg. x 160 psi / -100 to 1100 kpa	WJ8118	WJ8018	WJ8218	WJ8318	WJ8418	WJ8518	WJ8618	WJ8818	WJ8918
30" Hg. x 300 psi / -100 to 2100 kpa	WJ8124	WJ8024	WJ8224	WJ8324	WJ8424	WJ8524	WJ8624	WJ8824	WJ8924
0-15 psi / 105 kpa	WJ8140	WJ8040	WJ8240	WJ8340	WJ8440	WJ8540	WJ8640	WJ8840	WJ8940
0-30 psi / 210 kpa	WJ8142	WJ8042	WJ8242	WJ8342	WJ8442	WJ8542	WJ8642	WJ8842	WJ8942
0-60 psi / 420 kpa	WJ8146	WJ8046	WJ8246	WJ8346	WJ8446	WJ8546	WJ8646	WJ8846	WJ8946
0-100 psi / 700 kpa	WJ8148	WJ8048	WJ8248	WJ8348	WJ8448	WJ8548	WJ8648	WJ8848	WJ8948
0-160 psi / 1100 kpa	WJ8152	WJ8052	WJ8252	WJ8352	WJ8452	WJ8552	WJ8652	WJ8852	WJ8952
0-200 psi / 1400 kpa	WJ8154	WJ8054	WJ8254	WJ8354	WJ8454	WJ8554	WJ8654	WJ8854	WJ8954
0-300 psi / 2100 kpa	WJ8158	WJ8058	WJ8258	WJ8358	WJ8458	WJ8558	WJ8658	WJ8858	WJ8958
0-400 psi / 2800 kpa	WJ8160	WJ8060	WJ8260	WJ8360	WJ8460	WJ8560	WJ8660	WJ8860	WJ8960
0-600 psi / 4200 kpa	WJ8164	WJ8064	WJ8264	WJ8364	WJ8464	WJ8564	WJ8664	WJ8864	WJ8964
0-1000 psi / 7000 kpa	WJ8172	WJ8072	WJ8272	WJ8372	WJ8472	WJ8572	WJ8672	WJ8872	WJ8972



Series	A	B	C	D	E	G	J	K	L
WJ81	89.0 / 3.5	12.0 / 0.47	50.0 / 1.9	n/a	29.0 / 1.14	12.0 / 0.47	n/a	n/a	1/8" npt
WJ80	89.0 / 3.5	12.0 / 0.47	50.0 / 1.9	n/a	29.0 / 1.14	12.0 / 0.47	n/a	n/a	1/4" npt
WJ82									
WJ83									
WJ84									
WJ85									
WJ86	98.0 / 3.8	12.0 / 0.47	n/a	51.0 / 2.0	32.0 / 1.2	n/a	75.0	88.0 / 3.4	1/8" npt
WJ88	98.0 / 3.8	12.0 / 0.47	n/a	51.0 / 2.0	32.0 / 1.2	n/a	75.0	88.0 / 3.4	1/4" npt
WJ89	98.0 / 3.8	12.0 / 0.47	n/a	51.0 / 2.0	32.0 / 1.2	n/a	75.0	88.0 / 3.4	1/2" npt

Western Gauge & Instruments Ltd. – Head Office
 1,2 4045 – 74 Ave S.E.
 Calgary, AB T2C 1H5
 Ph: (403) 236-4888 Fax: (403) 236-7629
 Email: sales@wgilt.com

Western Gauge & Instruments Ltd. – Branch Office
 6624 – 50th Street
 Edmonton, AB T6B 2N7
 Ph: (780) 463-3800 Fax: (780) 463-3990
 Email: edm@wgilt.com